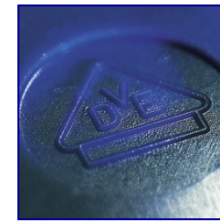
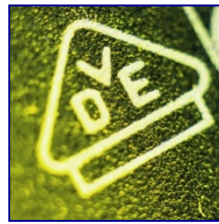
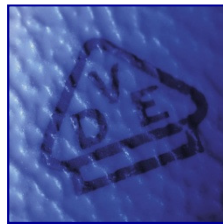


VDE Prüf- und Zertifizierungsinstitut GmbH
VDE Testing and Certification Institute



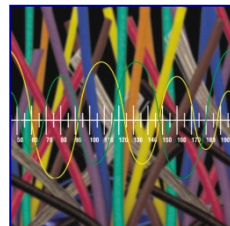
EPEAT PRE SERVICE

October 2012



VDE – Your partner for safety and quality and your passport to the global market

- Since 1920 the specialist for testing and certification of electrical and electronic components, appliances and systems
- Comprehensive service portfolio for manufacturers and retailers
- Full support from product design phase to global market entry
- Neutral and independent testing resulting in reliable and reproducible test results
- VDE test reports and VDE marks enjoy highest recognition on international level





VDE Worldwide

- VDE Headquarter
- VDE Branch Office
- VDE Partner

EUROPE

- Germany
- France
- Switzerland
- Italy
- Spain/Portugal
- Czech Republic
- Poland
- Hungary
- Bulgaria
- Romania
- Turkey
- Russia
- Belarus
- Ukraine

MIDDLE EAST

- Israel
- India
- Saudi Arabia (in prep.)
- UAE (in preparation)

ASIA PACIFIC

- China
- Taiwan
- Japan
- Korea
- Thailand
- Malaysia
- Singapore
- Australia

NORTH AMERICA

- Canada
- United States

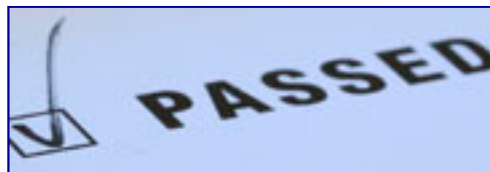
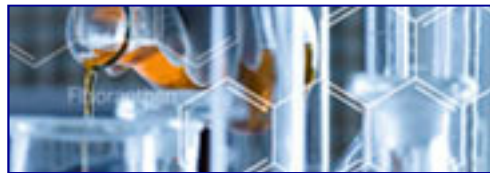
SOUTH AMERICA

- Argentina
- Brasil (in preparation)

AFRICA

- Morocco
- South Africa

VDE Service Portfolio



- Safety and EMC
- International certification
- **Chemical product safety and sustainability**
- **EPEAT PRE Service**
- Ecodesign; Energy efficiency
- Insulating material and environmental testing
- Software evaluation
- Usability tests
- Lifetime test; failure rate reduction
- Acoustics
- VDE SMART Manual
- Inspection services
- Management system audits

Activities of VDE regarding EPEAT

- VDE is Partner (PRE) of EPEAT in Europe for registration of products under EPEAT
- Product Registration Entity PRE: VDE is the strong partner of manufacturers who want to register their products under EPEAT.
- Manufacturers who want to register have to make a selection about the PRE they want to partner with
- VDE is well known in the electro technical industries in Europe and Asia
- VDE consults with the manufacturers in their time zone and in local languages

Services around PRE registration

- VDE helps manufacturers to understand the requirements of the registration under EPAT
- VDE can evaluate and test components and or products that are candidates for registration under EPEAT
- VDE can measure single product properties such as the RoHS directive, Recyclability (WEEE) evaluation and calculations for a Product Carbon Footprint and energy consumption

Chemical Testing and Sustainability - Overview

Chemical testing

- **RoHS**
- **REACH (SVHC)**
- **PAH (GS mark)**
- **Phthalates**
- **Food Contact Materials**
(Polymers and Metals/Alloys)

Information Exchange

- **Material Declaration** – Material analysis according to specific Materials List
- Reporting according to IPC 175X
- Provides data for BOM Check

Sustainability

- **Life Cycle Assessment - Carbon footprint**
Evaluation of product life cycle (production, transport, usage, recycling) regarding CO₂ impact
- **WEEE Recyclability Evaluation and Calculation**
- **Eco Label Evaluation**
- **EPEAT PRE Service**





VDE Point of Contact for EPEAT PRE Service

Dr. Michael Riess
VDE Testing and Certification Institute
Head of Chemical Lab FG 44
Merianstr. 28
63069 Offenbach
Germany
Tel.: +49-69-8306-830
Michael.Riess@vde.com

**Your reliable partner for
Testing, Certification and
Product Registration**

VDE



Thank you for your attention!

VDE